



Erasmus Mundus and
Erasmus Mundus Students and Alumni Association

Mana pieredze studējot

EMM NANO

Master of Nanoscience
and Nanotechnology



*Erasmus Mundus Master of
Nanoscience and Nanotechnology
(2010-2012)*

Guntars Kitenbergs

guntars.kitenbergs@gmail.com



EMA

Erasmus Mundus Students and Alumni Association

Kā turp nokļuvu?

- Rīgas 64. vidusskola (labākā skola! 😊)
- LU FMF Fizikas bakalurs
 - Erasmus semestris Leibniz Universität Hannover (Vācija)
- Atrast maģistrantūru citur = Wikipedia + Google

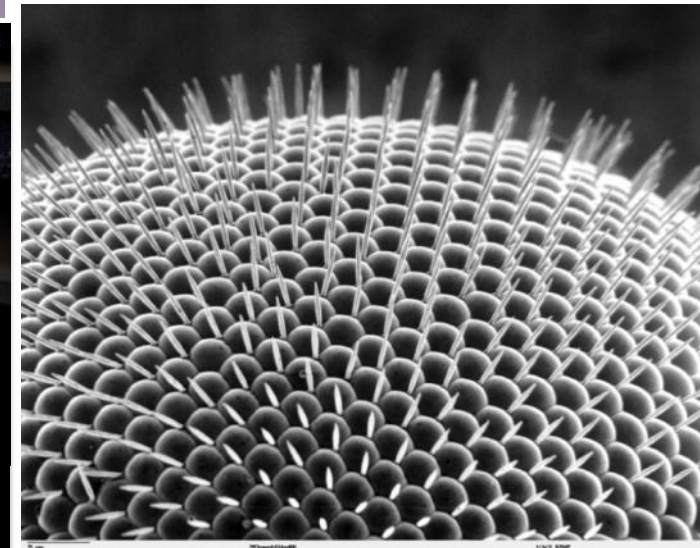
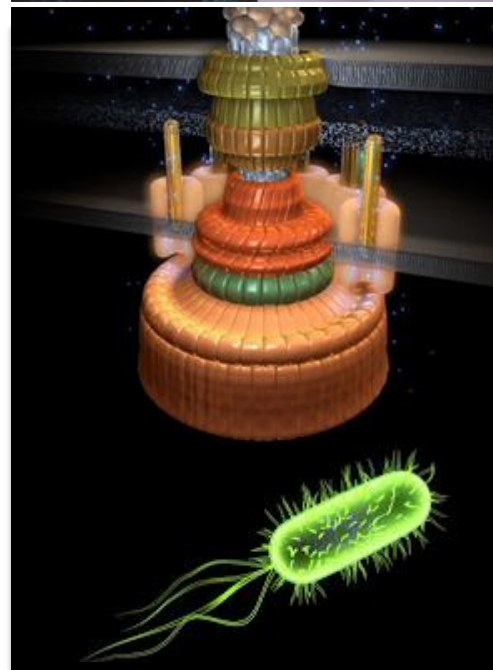
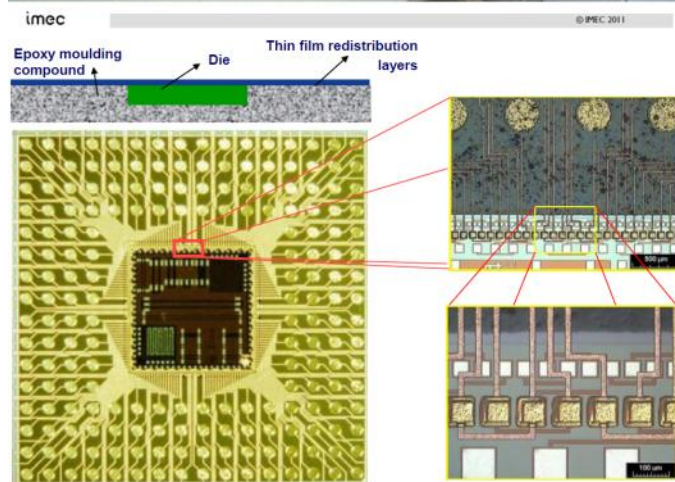
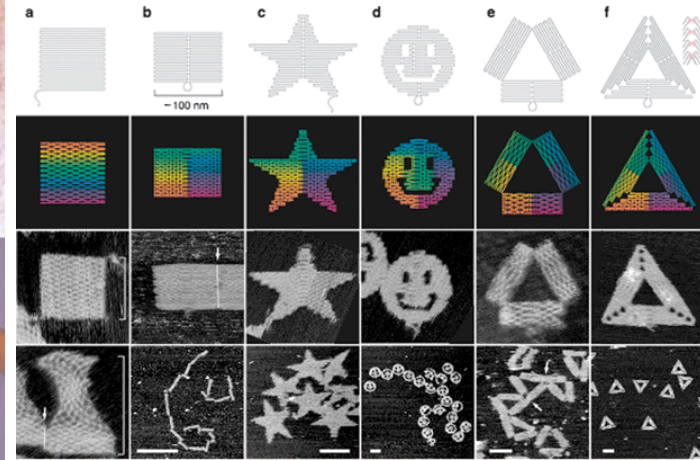
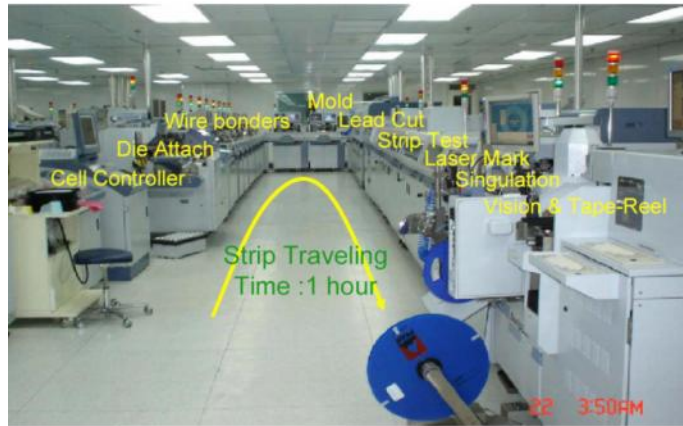
Programmas mājas lapa <http://www.emm-nano.org/>

Angļu valodas eksāmens (IELTS)

Pieteikums-Apstiprinājums

NANO

AUTOMATION OF PACKAGE ASSEMBLY LINE



EMM NANO

Master of Nanoscience
and Nanotechnology

ERASMUS MUNDUS
 NANOSCIENCE AND
 NANOTECHNOLOGY
 UNIVERSITY PARTNERS
 ASSOCIATED PARTNERS
 OBJECTIVES
 LANGUAGE
 CREDITS
 PROGRAM
 DEGREE
 LECTURE SERIES
 SPRING WORKSHOPS
 TUITION FEE
 ADMISSION AND
 SELECTION
 GRANTS FOR STUDENTS
STUDENT APPLICATIONS
 RESEARCHERS
 STUDENT SERVICES
 COMMON RULES
 PROFESSIONAL
 PERSPECTIVES
 STUDENT PICTURES
 ALUMNI
 TESTIMONIALS
 ANNOUNCEMENTS
 FAQ
 CONTACT

NEWS: ORIENTATION DAYS

Join the **Orientation days** for new international students, starting in academic year 2014-2015, from **16-21 September 2014** at K.U. Leuven.

On **20 September 2014** there will be a city game, followed by an **after-party**. Specially created for international students but open to all!

Information, full program and registration can be found [here](#).

To help you find your way around the university, Leuven and Belgium, you can request a **personal buddy**, a K.U.Leuven student (a Flemish student or another international student) who will answer all your practical questions. Most of the your buddies will also introduce you to Belgian habits and customs, and some even to their own family. More information and request form can be found [here](#).

UPCOMING
EVENTSORIENTATION DAYS FOR
NEWCOMERS

Sep 16, 2014 13:00 - Sep 21,
2014 17:30

WELCOME SESSION FOR NEW
STUDENTS

Sep 22, 2014 13:00 - 17:00



APPLICATIONS

The call for applications for **academic year 2014-2015** is **closed**. Deadline for applications for academic year 2015-2016 is **January 31 2015** for all students (EU and non-EU).

However, we advise applicants, to submit their application by *January 15th, 2015 at the latest* in order to avoid last minute problems with incomplete files, overload of the application website etc., and to have some margin to cope with such problems.

Incomplete applications or partially uploaded files will not be considered after the deadline of 31 January 2014.

Bachelor students from one of the partner universities who will study one of the two master years at their home university or EU-students who do not apply for a scholarship can still apply until **May 31, 2015!**

SCHOLARSHIPS AVAILABLE

Full EM-scholarships are available for **non-EU students** to cover the tuition fee and all living expenses (24000€/year).

Limited EM-scholarships available for **EU students** (10000€/year).

Informācija sociālajos tīklos

The image shows a screenshot of a Facebook group page for 'EMM-nano'. The page features a green header with the group name 'EMM NANO' and 'Master o and Nan'. Below the header, there are navigation tabs for 'EMM-nano', 'Members', 'Events', 'Photos', and 'Files'. A search bar is located on the right side of the navigation bar. The main content area includes a 'Write Post' section with options to 'Add Photo/Video', 'Ask Question', and 'Add File'. A post by Fábio Barachati, dated 7 September at 22:20, asks if anyone can sign in to the new Limo platform. Below the post, there are two comments from Arturo Cn, one dated Yesterday at 00:14 and another at 00:17. The right sidebar contains an 'ABOUT' section with 1,038 members, a 'Public Group' status, and a description of the group. It also includes a 'CREATE NEW GROUPS' section with a '+ Create Group' button and a 'SUGGESTED GROUPS' section with a '+ Join' button for a group named 'CIRC Group Autumn '14 - Chalmers International Rec...'. The page also shows a 'Joined' button, a 'Share' button, and a 'Notifications' button.

EMM-nano

Home

EMM NANO

Master o
and Nan

Joined

Share

Notifications

EMM-nano

Members

Events

Photos

Files

Search this group

Write Post

Add Photo/Video

Ask Question

Add File

Write something...

Fábio Barachati

7 September at 22:20

Hello! Can any of you sign in to the new Limo platform?

Like · Comment · Share

View 2 more comments

Arturo Cn

Ay Fabio, of course. What's wrong?

Yesterday at 00:14 · Like

Fábio Barachati

They changed the interface and now my login doesn't work on Limo, but it still works on kulocket

Yesterday at 00:15 · Like

Arturo Cn

It does work for me

Yesterday at 00:17 · Like

Write a comment...

ABOUT

1,038 members

Public Group

This group is for all students, who were at some point in time enrolled in the Erasmus Mundus Ma... [See More](#)

1,038 members (9 new) · Invite by Email

+ Add people to Group

CREATE NEW GROUPS

Groups make it easier than ever to share with friends, family and teammates.

+ Create Group

SUGGESTED GROUPS

See All

CIRC Group Autumn '14 - Chalmers International Rec...

920 members

+ Join

<http://www.emm-nano.org/>

Leti

Total 120 erts for 2 year

**Nanoscience and nanotechnology fundamentals
(0-12 erts - Leuven)**

General interest courses (9 erts - Leuven)

Lecture series Nanoscience and nanotechnology (3 erts - All)

Core courses (30 erts - Leuven)

5 Graduating options

	<i>Nanophysics (Chalmers/ Grenoble)</i>	<i>Nanochemistry (Grenoble)</i>	<i>Nanoelectronics (Chalmers/ Dresden)</i>	<i>Biophysics (Dresden)</i>	<i>Bio-nanotechnology (Grenoble)</i>
Major courses (15 erts comp. + min 6 erts elective Leuven)	Major courses (15 erts comp. + min 6 erts elective Leuven)	Major courses (15 erts comp. + min 6 erts elective Leuven)	Major courses (15 erts comp. + min 6 erts elective Leuven)	Major courses (15 erts comp. + min 6 erts elective Leuven)	Major courses (15 erts comp. + min 6 erts elective Leuven)
Broadening courses (15 erts)	Broadening courses (15 erts)	Broadening courses (15 erts)	Broadening courses (15 erts)	Broadening courses (15 erts)	Broadening courses (15 erts)
Master thesis (30 erts)	Master thesis (30 erts)	Master thesis (30 erts)	Master thesis (30 erts)	Master thesis (30 erts)	Master thesis (30 erts)

imec

Erasmus
Museum
Association

<http://www.emm-nano.org/>

500 €/mēn

Apdrošināšana

Mūsdienīga
izglītība

Francijā
laboratorijā
>435 €/mēn

2x May
Workshop

Nanoscience and nanotechnology fundam...					
Lectur...					
... (30 ects - Leuven)					
5 Graduating opti...					
	Nanochemistry (Grenoble)	Nanoelectronics (Chalmers/ Dresden)			
Major courses (15 ects comp. + min 6 ects elective Leuven)	Major courses (15 ects comp. + min 6 ects elective Leuven)	Major courses (15 ects comp. + min 6 ects elective Leuven)	Major courses (15 ects comp. + min 6 ects elective Leuven)	Major courses (15 ects comp. + min 6 ects elective Leuven)	Major courses (15 ects comp. + min 6 ects elective Leuven)
Broadening courses (15 ects)	Broadening courses (15 ects)	Broadening courses (15 ects)	Broadening courses (15 ects)	Broadening courses (15 ects)	Broadening courses (15 ects)
Master thesis (30 ects)	Master thesis (30 ects)	Master thesis (30 ects)	Master thesis (30 ects)	Master thesis (30 ects)	Master thesis (30 ects)



Pieredze

Vērts gatavoties:

→ *“Viens pats svešumā” sajūta*

→ *2 vai vairāk valstis*

→ *2 vai vairāk valodas*

→ *2 vai vairāk atšķirīgas izglītības sistēmas/birokrātija*

→ *Internacionāla studiju vide*

→ *Dažādi angļu valodas akcenti*

→ *Atšķirīgas kultūras, reliģijas, uzskati, ēdieni, komunikācija*

Pieredze

NANO HISTORY



Erasmus
Mundus
Association

Ko es ieguvu/zaudēju?

- + Augsta līmeņa aktuāla izglītība
- + Starpkultūru kompetence
- + State-of-the-art aprīkojums
- + Draugi, paziņas, kontakti
- + Pieredze pasaules klases laboratorijā
- + **Draugi, paziņas, kontakti**
- Prom no ģimenes/draugiem
- Finances (??)
- Secīgums izglītībā
- Birokrātija
- Lieki priekšmeti

Kas tālāk (mana un draugu pieredze)?

- **Doktorantūras studijas**

- Ārzemēs un/vai Latvijā

- *Manā gadījumā:*

LU FMF/MMML



mmml.lu.lv

UPMC/PHENIX



phenix.cnrs.fr

- **Darbs**

- Ārzemēs un/vai Latvijā



Erasmus
Mundus
Association



Erasmus Mundus and
Erasmus Mundus Students and Alumni Association

IR VĒRTS!

“Aizbraukt, apgūt, atgriezties”

Jautājumi?